

INLAND PACIFIC

Commercial Properties



Commercial Building For Lease 7,328 Sq Ft

8745 North Magnolia Ave., Suite A

Property Features:

- Open reception / waiting room
- Two 12x14 roll-doors
- Frontage on North Magnolia Ave. and Highway 67 with a new marquis sign on Magnolia Ave.
- Steps from future highway 67 & 52 interchange
- City of Santee zoning is Light Industrial (IL), with a General Commercial (GC) overlay which allows for a wide range of uses including automotive
- Traffic counts approx. 37,000 per day on North Magnolia and 40,000 per day on Highway 67
- Competitive rental rates, Call for pricing

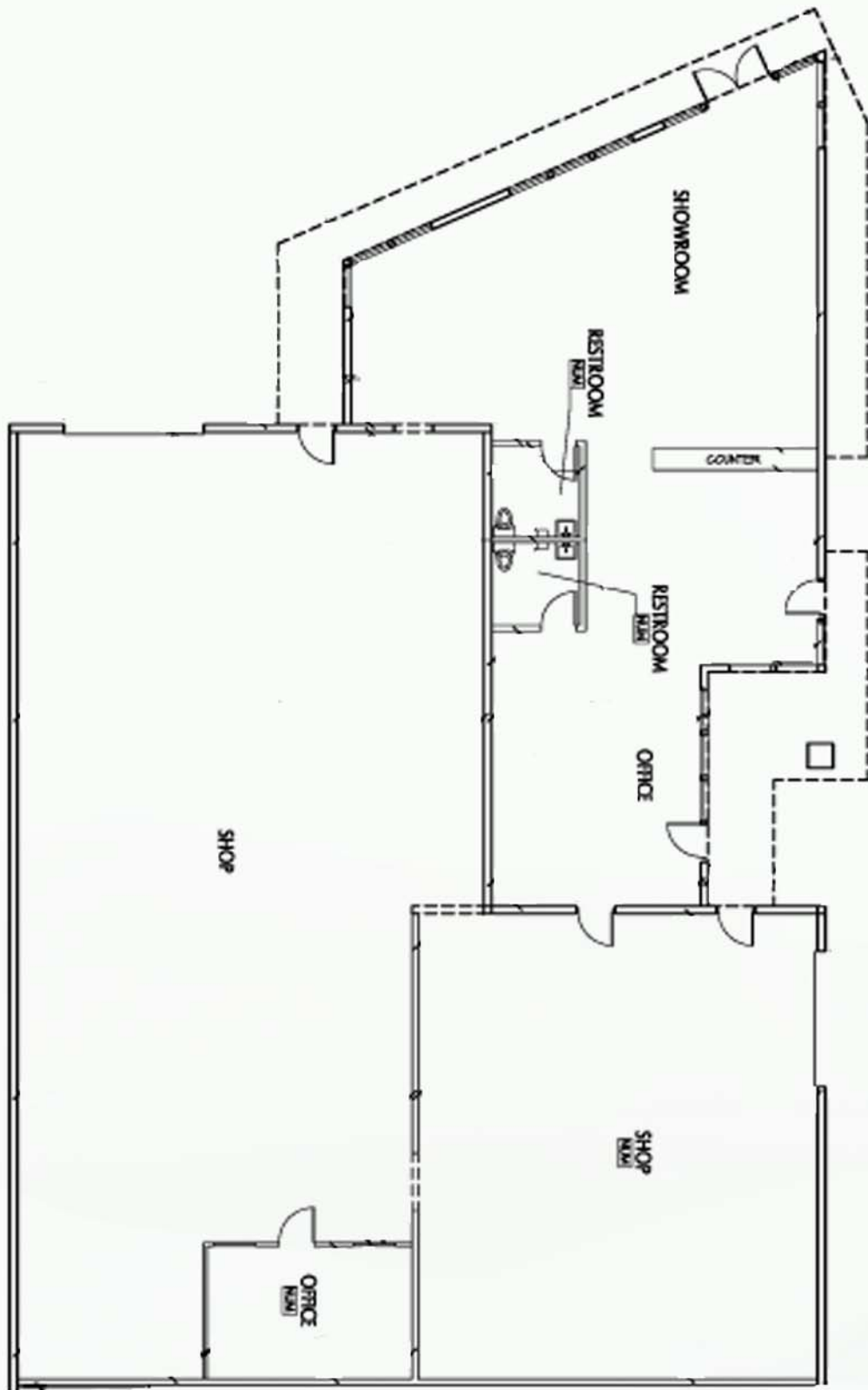


For More Information Contact:

Robbie Cornell / James Renner
CA Lic # 01702034 CA Lic # 01308083
(619) 596-1880

The information above was furnished by the owner or obtained from information we understand was authorized by the owner. No warranties or representations, expressed or implied, are made as to the accuracy of the information contained herein, and same is submitted subject errors, omissions change of price, rental or other conditions, withdrawal without notice, and to any special listing condition imposed by our principals. This information was given with the understanding that all negotiations relating to purchase, renting or leasing of the property described herein shall be conducted through Inland Pacific Commercial Properties.

8745 Magnolia Ave., Suite A



**Not to scale*