

OFFICE SPACE FOR LEASE

4585 Murphy Canyon Road, San Diego, CA 92123



Approx. 3,789 SqFt Window Line Office Area

For more information contact:

Robbie Cornell 619-596-1880 Ext:112

rcornell@ipcommercialproperties.com
CA Lic # 01702034



8665 Argent St., Suite C, Santee, Ca 92071
www.ipcommercialproperties.com

OFFICE SPACE FOR LEASE

4585 Murphy Canyon Road, San Diego, CA 92123

Features:

Suite Overview: Extensive glass lined office suite with floor to ceiling windows along the westside of the space

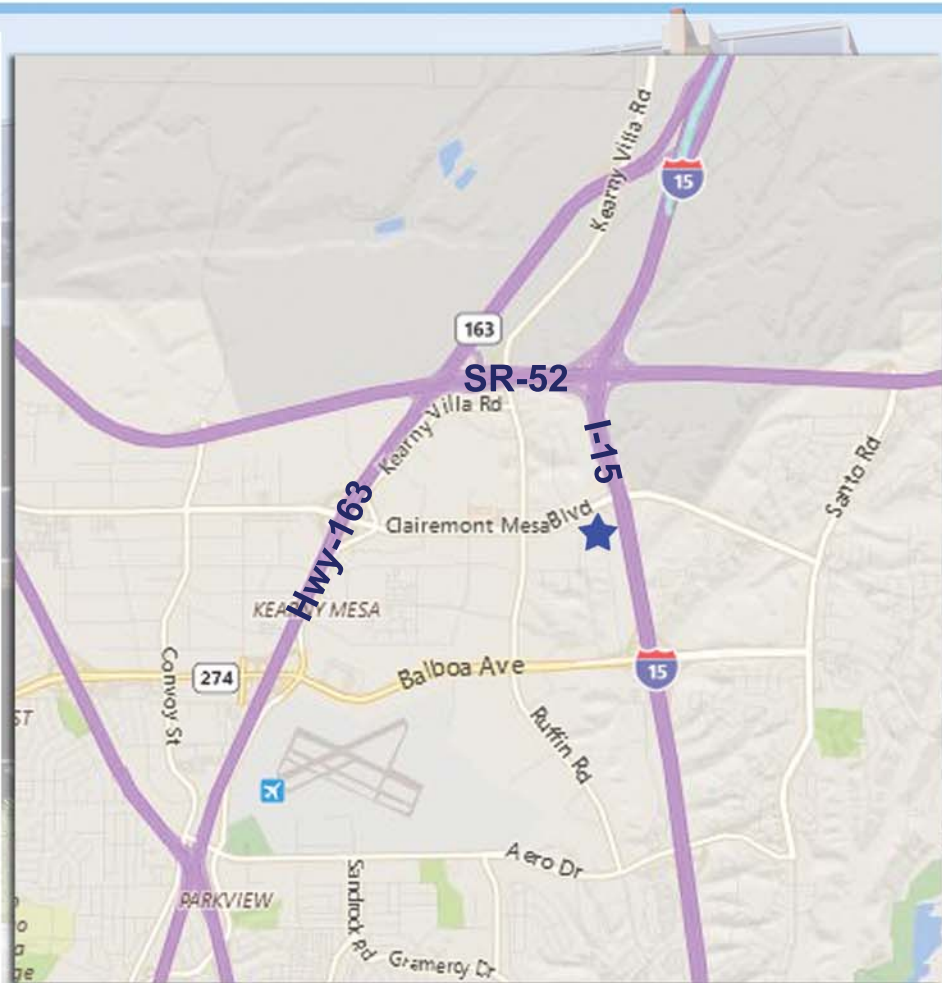
Suite Size: Approx. 3,789 SqFt of upstairs office space

Office Layout: Reception area, 12 private offices, conference room, in suite restroom

Signage: Building signage available on the highly travel Murphy Canyon Road

Location: Minutes off the I-15 at Clairemont Mesa Blvd. Plus close proximity Hwy-52, Hwy-163 and I-8. Adjacent to retail centers and other food establishments

Lease Rate: \$1.30 per SF Gross + Electric



For more information contact:

Robbie Cornell 619-596-1880 Ext:112

rcornell@ipcommercialproperties.com
CA Lic # 01702034

INLAND PACIFIC
COMMERCIAL PROPERTIES

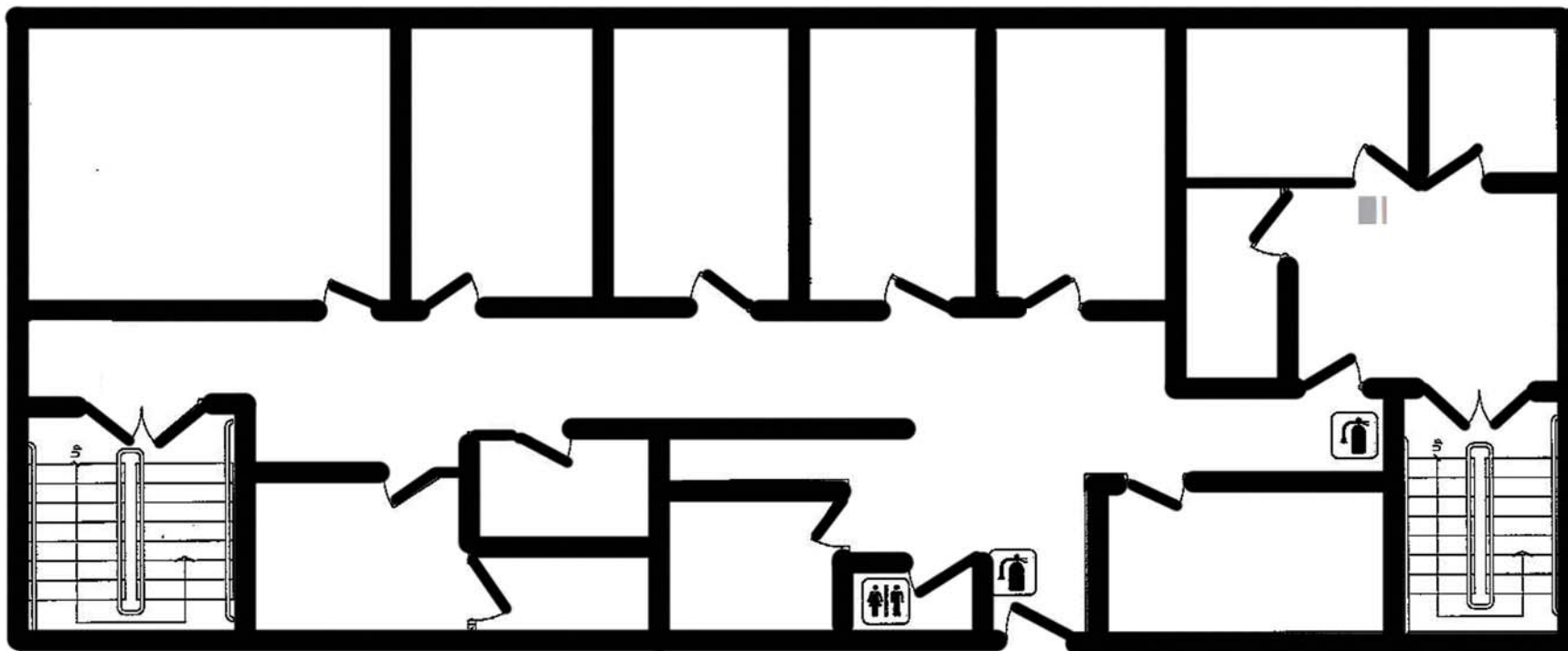
8665 Argent St., Suite C, Santee, Ca 92071
www.ipcommercialproperties.com

OFFICE SPACE FOR LEASE

4585 Murphy Canyon Road, San Diego, CA 92123

Current Floor Plan

WINDOW LINE



For more information contact:

Robbie Cornell 619-596-1880 Ext:112

rcornell@ipcommercialproperties.com
CA Lic # 01702034



8665 Argent St., Suite C, Santee, Ca 92071
www.ipcommercialproperties.com